

STEERING COLUMN LOCK

- ⚠ During vehicle recovery, the Smart Key must remain inside the vehicle, so that the steering column remains unlocked.

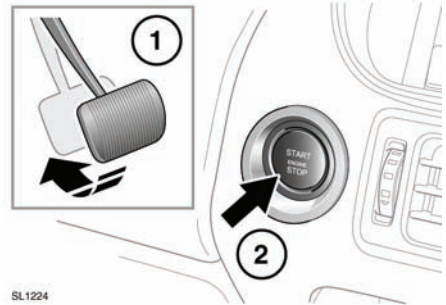
Your vehicle is fitted with an electronic steering column lock. The column unlocks when a Smart Key is detected inside the vehicle.

If any malfunction of the steering column lock occurs, **STEERING COLUMN LOCKED** will be displayed in the message centre. If this occurs:

1. Lock and then unlock the vehicle using the Smart Key.
2. Try again to unlock the steering column lock, by turning the steering wheel gently to the left and right.
3. If the problem persists, seek qualified assistance immediately.

SWITCHING ON THE IGNITION

To turn on the ignition without starting the engine. Ensure the brake pedal is not depressed, and with a valid Smart Key present in the vehicle, press the START/STOP button and hold until the warning indicators illuminate, then release the button.



- ⚠ If the brake pedal is applied when the start/stop button is pressed, the engine will start.

Starting the engine

KEYLESS STARTING



Never start the engine and leave it running when the vehicle is in an enclosed space. Exhaust gases are poisonous and can cause unconsciousness and death if inhaled.

To start the engine:

- The Smart Key must be inside the vehicle.
- **P** or **N** must be selected.
- Apply the brake pedal.
- Press and release the START/STOP button.

Once the engine has started, the brake pedal can be released if it safe to do so.

ADDITIONAL INFORMATION FOR DIESEL ENGINE MODELS

Diesel engine models may have an additional delay of up to 12 seconds between the START/STOP button being pressed and the engine starting. An information message will be displayed on the message centre. During this delay period, keep the brake pedal depressed and do not press the START/STOP button a second time. Doing so will cancel the starting procedure.

Note: *In very cold conditions it is normal for the engine cranking time to be increased.*

The glow plug warning lamp will remain illuminated until the engine starts.

IF THE ENGINE FAILS TO START

Note: If the engine fails to crank when the START/STOP button is pressed and there has been a recent collision, the fuel system inertia switch may have been tripped. Seek qualified assistance.

Petrol engines:

If the engine persistently fails to start, make sure the transmission is in **P** or **N** and press the START/STOP button (without applying the brake pedal) to switch on the ignition. Slowly depress the accelerator pedal fully, then hold it in the fully down position and press the START/STOP button with the brake pedal applied. The engine will then begin to crank. Release the accelerator pedal when the engine starts.

If the engine fails to crank, or fails to start, consult your Dealer/Authorised Repairer.

Diesel engines:

If the engine persistently fails to start, make sure the transmission is in **P** or **N** then press the START/STOP button (with the brake pedal applied). Keep the START/STOP button and the brake pedal pressed until the engine starts, then release.

If the engine still fails to crank, or fails to start consult your Dealer/Authorised Repairer.

Power assisted steering:

If the engine fails to start, there will be no power assisted steering.

START/STOP WHILE MOVING



It is not advisable to switch off the engine while the vehicle is moving. However, if a situation arises where engine switch off is urgent, the following procedure applies.

1. Press the START/STOP button for a total of two seconds, or

2. Press the START/STOP button twice within two seconds.

With either method, a warning message will be displayed on the message centre.

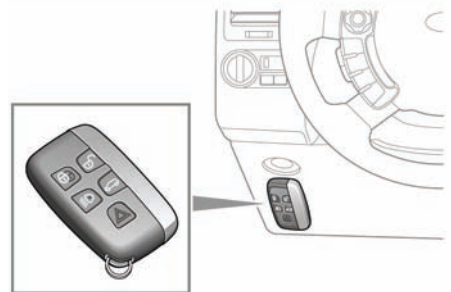
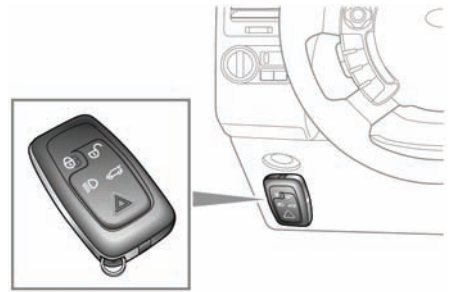
Rolling restart

1. Initiate by selecting transmission neutral position **N** and pressing the START/STOP button.
2. When the engine starts, select **D**.

KEYLESS START BACKUP

If the vehicle has been unlocked using the emergency key blade or the Smart Key is not detected by the vehicle, it will be necessary to use the keyless start backup to disarm the alarm and start the engine.

The keyless start backup can only be used when the message **Smart Key Not Found - Refer to handbook** is displayed in the message centre.



SL1901

Position the Smart Key against the underside of the fascia with the buttons facing downwards.

When the Smart Key is positioned in this area, it will be recognised by the vehicle and the message **Smart Key Recognised** will be displayed in the message centre.

Holding the Smart Key in position and with the brake pedal depressed, press and release the START/STOP button to start the engine.

When the engine starts, you no longer need to hold the Smart Key beneath the fascia.

Note: If the Smart Key is not recognised or the engine still fails to start, consult your Dealer/ Authorised Repairer

STOPPING THE ENGINE

Before stopping the engine, ensure that the vehicle is parked safely with the parking brake applied. The gear selector will also need to be in **P**.

Press and release the engine START/STOP button to stop the engine. The audio, telephone and touch screen systems will revert to stand-by mode.

Pressing the START/STOP button again (without pressing the brake pedal), will activate the systems.

EMISSION CONTROL SYSTEM



Exhaust fumes contain poisonous substances which can cause unconsciousness and may even be fatal.

- Do not inhale exhaust gases.
- Do not start or leave the engine running in an enclosed unventilated area.
- Do not drive the vehicle with the taildoor open.
- Do not modify the exhaust system.
- Exhaust leaks should be repaired immediately.
- If exhaust fumes are thought to be entering the vehicle, have it investigated immediately.

Land Rover vehicles are fitted with emission and evaporative control systems. In many countries it is unlawful to tamper, modify or replace such equipment and legal penalties apply if the laws are flouted.

Land Rover Dealers/Authorised Repairers are properly equipped to perform repairs and to maintain these systems.

Note: *Running out of fuel can result in a misfire. This can cause damage to the emission control system.*

DIESEL PARTICULATE FILTER REGENERATION

The DPF is part of the exhaust system. It removes most of the harmful particles from the exhaust emissions and stores them until they are burnt away. Occasionally the DPF requires a regeneration process to clean itself. When regeneration is required a **DPF** message will be displayed on the message centre.

Note: *While carrying out the DPF regeneration procedure, observe all relevant speed limits, laws and regulations.*

1. Drive the vehicle until the engine reaches normal operating temperature. Do not leave the engine idling to achieve operating temperature.
2. Drive the vehicle for a further twenty minutes, keeping the road speed above 80km/h (50mph).
3. If successful, the message will extinguish. If not, repeat the procedure.

Note: *If after three attempts to achieve regeneration, the message does not extinguish, contact your Land Rover Dealer/Authorised Repairer.*

If the message, **DPF FULL** is displayed in the message centre, contact your Land Rover Dealer/Authorised Repairer as soon as possible.



The regeneration procedure produces very high temperatures from the exhaust system. Do not park the vehicle over combustible materials.